



Cancer RADAR

Mapping cancer risk by migration background in Europe.

Putting cancer inequalities among migrants in Europe on the radar.

Dr. C.J. Alberts (PI), D. Georges, Dr. S. Rosso, Dr. F. Bray, Dr. I. Baussano (PI)





We/I have no conflicts of interest to disclose.



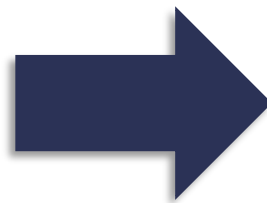
European Commission





Europe's Beating Cancer Plan

Communication from the commission to the European Parliament and the Council




European Commission

Live, work, travel in the EU

European Cancer Inequalities Registry




Country



Sex



Education



Income



Urbanisation



Age



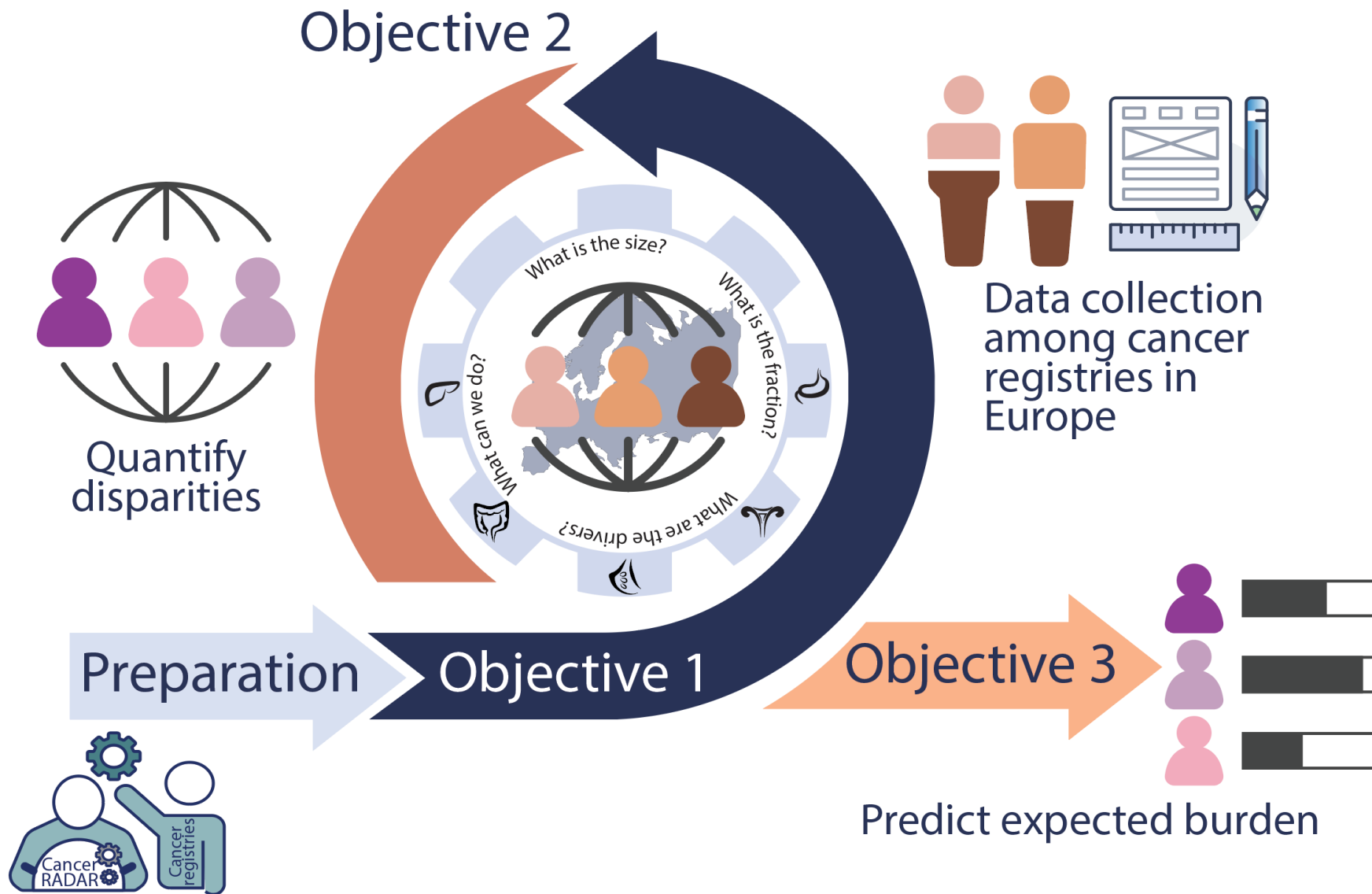
Migration background

Cancer RADAR =

Collect

Quantify

Predict



Objective 1: Collect

Cancer types



Migration background

Less often used definitions are:

- nationality
- name
- religion

The most accepted ways:

- ethnicity (self-assigned)
- birth-country (own and/or parental)

- ✓ Birth-country as a proxy for ethnicity is widespread
- ✓ It is often routinely collected for administrative purposes
- ✓ It is objective and an unchanging attribute

Objective 1: Collect

Data collection



Step 1 - Data collection:
- by 5-year age groups
- by CI5 collection periods
(2013-2017, 2008-2012, 1003-2007)



Step 2 - Data processing:
- highly-aggregated estimates
i.e. anonymous data



Step 3 - Data sharing

Methodology – stratified by birth-country

Cancer risk

=

- Stomach (C16)
- Liver (C22.0)
- Cervix uteri (C53)
- Breast (C50)
- Colorectal (C18-20)

Numerator

- Population-at-risk
- All All cancers (C00-97/C44)

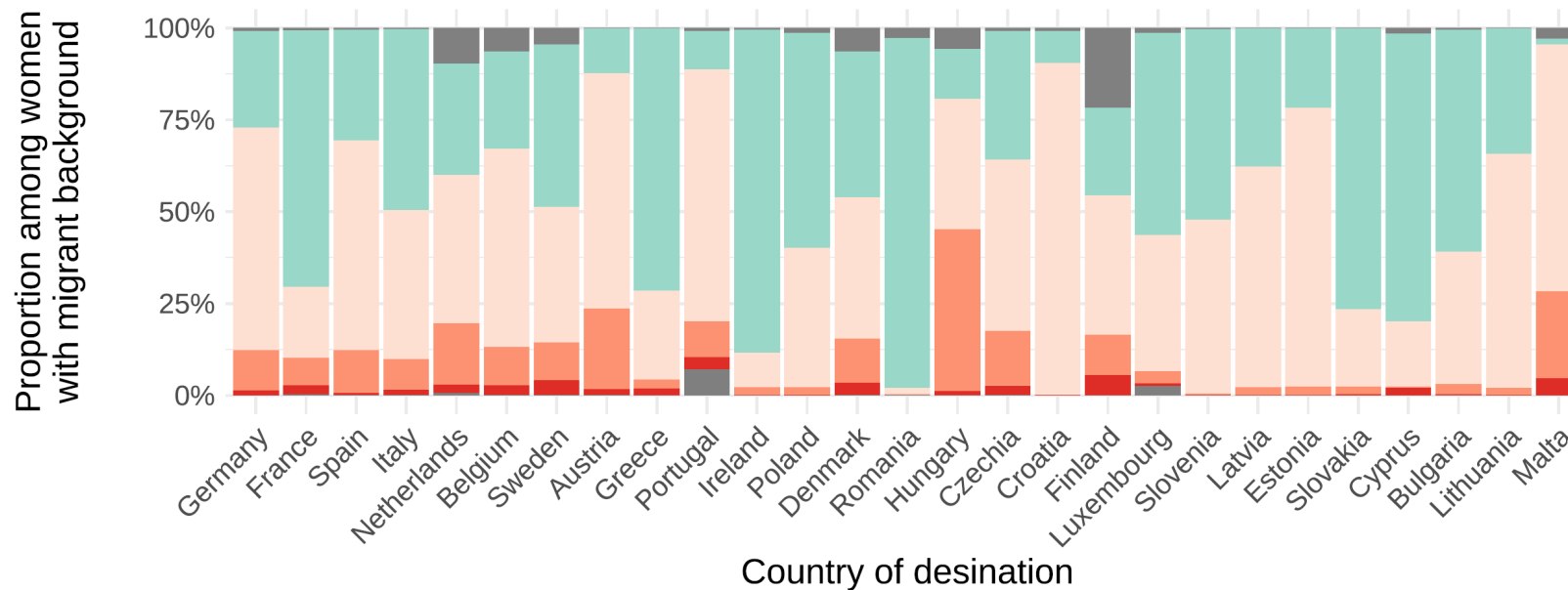
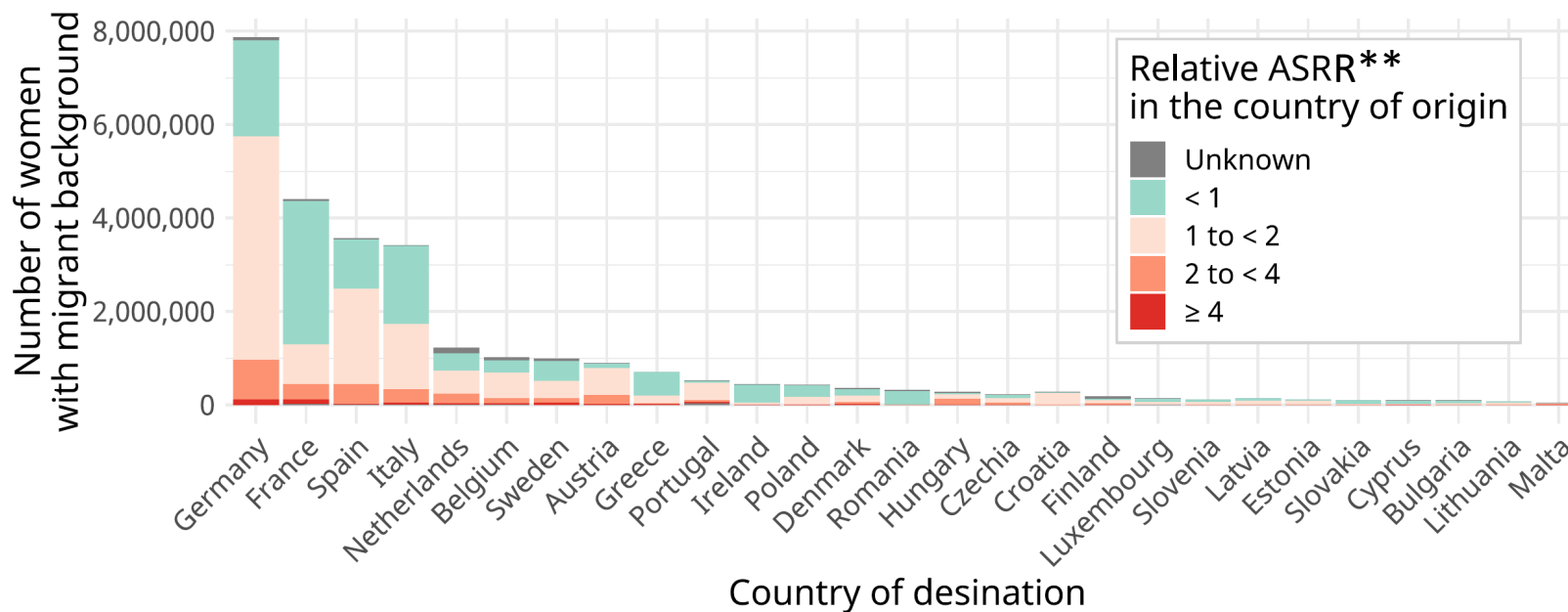
Denominator

PIR = Proportional incidence ratio
Source: P Boyle, D.M. Parkin, Ch11, IARC, 1995



Liver cancer

Women

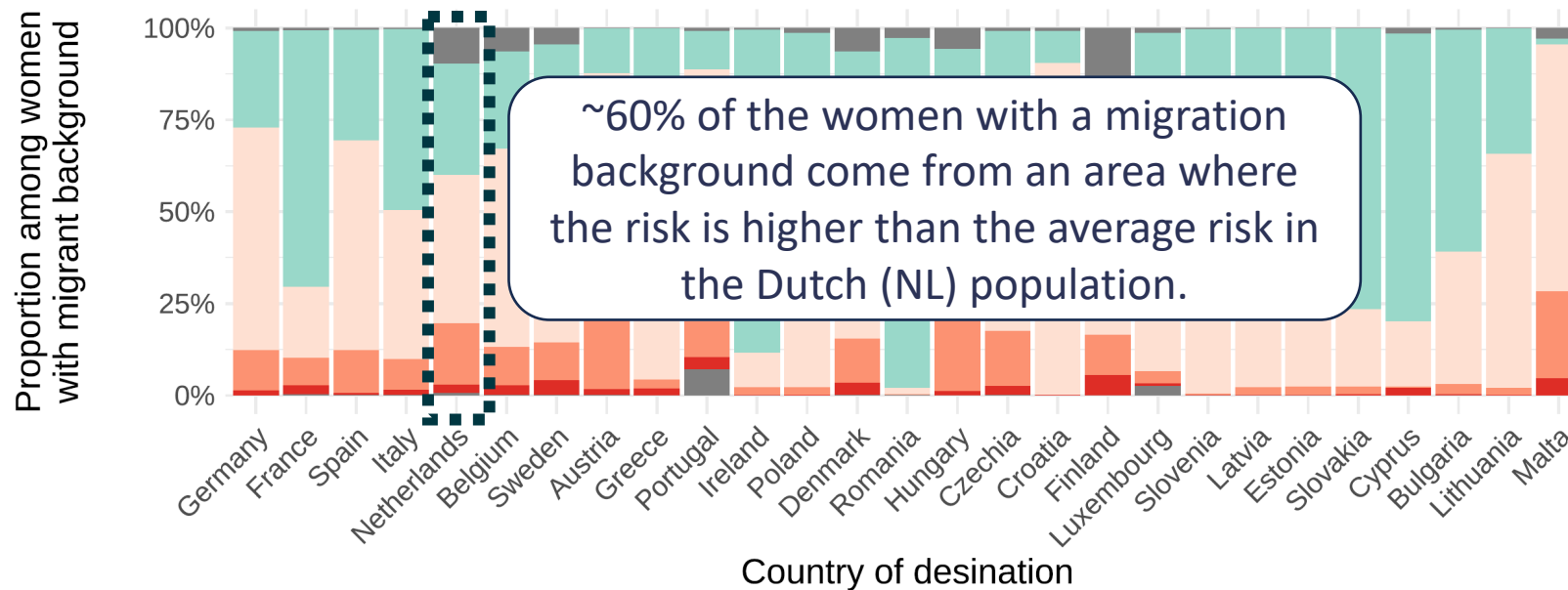
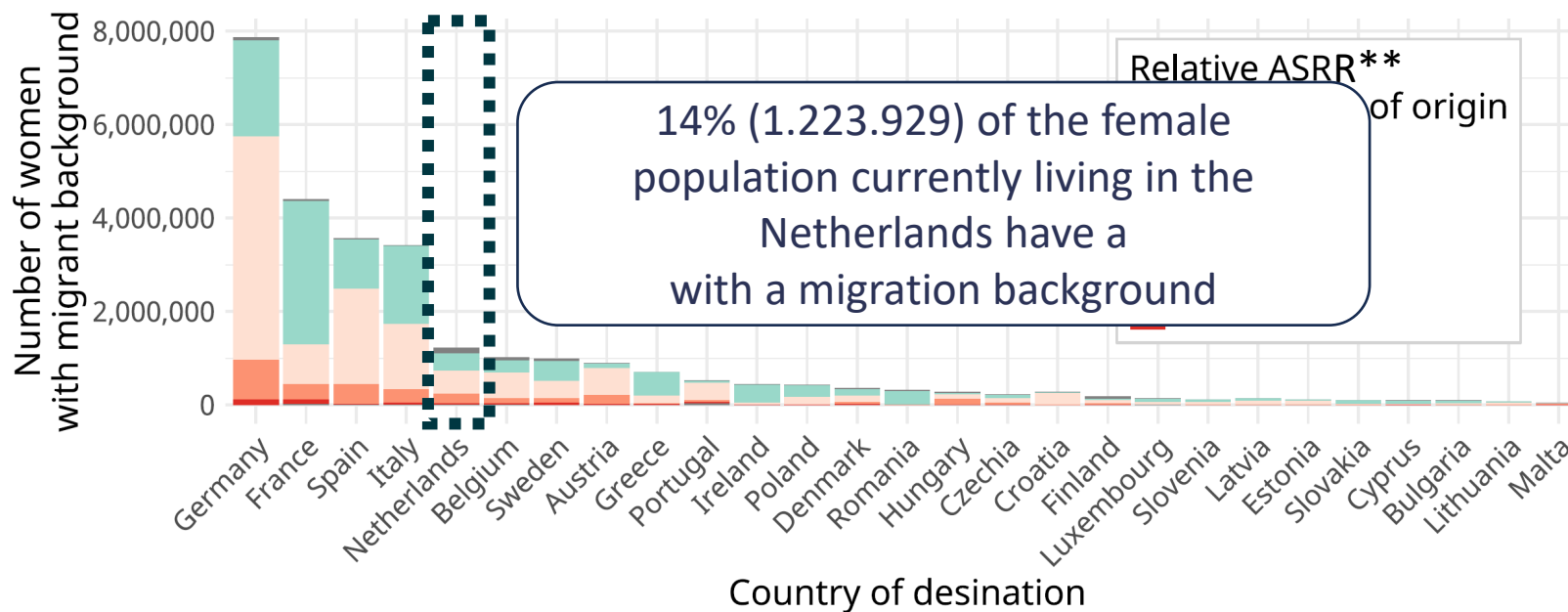


*Source = UN Migrant Stock 2020 + Globocan 2022

** Age standardized incidence rate ratio using the host population as a reference

Liver cancer

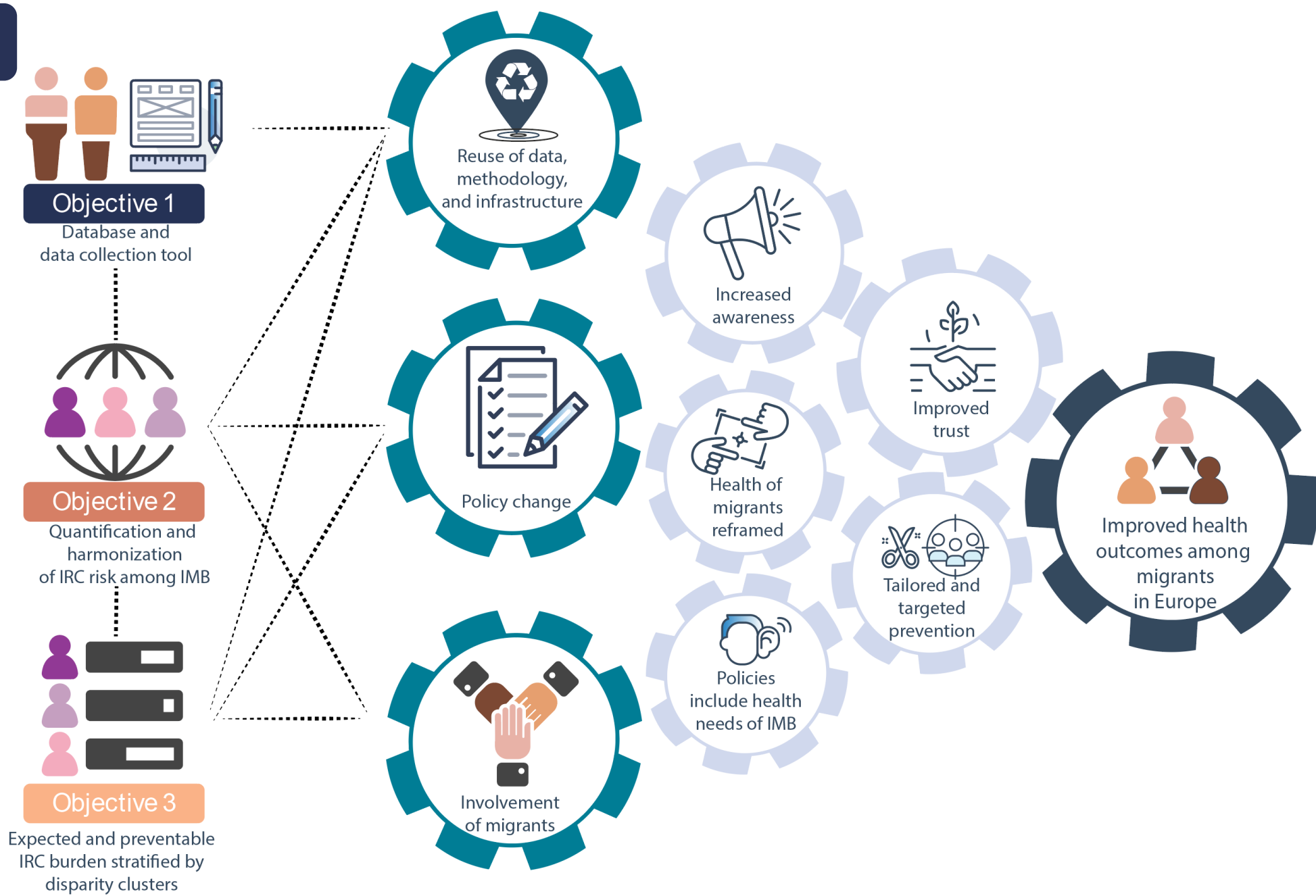
Women



*Source = UN Migrant Stock 2020 + Globocan 2022

** Age standardized incidence rate ratio using the host population as a reference

Outlook



Thank you for your attention

Working group:

Dr. C.J. **Alberts** – **Amsterdam UMC**, Amsterdam, the Netherlands and Public Health Service Amsterdam, Amsterdam, Netherlands

Dr. I. **Baussano** – International Agency for Research on Cancer (IARC/WHO), **Lyon, France**

Dr. S. **Rosso** – University of Turin - **Piedmont Cancer Registry**

D. **Georges** – International Agency for Research on Cancer (IARC/WHO), **Lyon, France**

Dr. I. **Man** – International Agency for Research on Cancer (IARC/WHO), **Lyon, France**

Dr. F. **Bray** – International Agency for Research on Cancer (IARC/WHO), **Lyon, France**

Dr. L. **Richiardi** – University of Turin - **Piedmont Cancer Registry**

Dr. J. **Galceran** – Cancer registry of Tarragona, Cancer Epidemiology and Prevention Service, Hospital University Sant Joan de Reus, IISPV, **Reus, Spain**

Dr. M. **Carulla** – Cancer registry of Tarragona, Cancer Epidemiology and Prevention Service, Hospital University Sant Joan de Reus, IISPV, **Reus, Spain**

Dr. A **Bordoni** – Cancer Registry of canton **Ticino, Switzerland**

Dr. L. **Ortelli** – Cancer Registry of canton **Ticino, Switzerland**

Dr. M.D. **Chirlaque López** – Cancer registry of **Murcia, Spain**

Dr. K. Van **Herckd** – Belgian Cancer Registry, **Brussels, Belgium**

Dr. F. **Verdoodt** – Belgian Cancer Registry, **Brussels, Belgium**

Dr. O. **Visser** – Netherlands Comprehensive Cancer Organization (IKNL), Utrecht, **The Netherlands**

Funded by



[International Agency for Research on Cancer](#)



Questions?

c.j.alberts@amsterdaumc.nl